

**Notes to candidates**

Before you start to analyse the research, you must select a brief and read the 'Instructions for candidates'. This gives details of the skills you must demonstrate and the type of evidence you must provide.

**You should speak to your teacher or lecturer before you start if you are unclear about what is required for this assessment.**

You need to produce the specification detailed on the 'research and specification pro forma'.

You must:

- draw conclusions from the research
- ensure your specification covers a range of issues such as aesthetics, function, ergonomics, performance, and cost

**Design brief**

Carnival World would like a design proposal for a product that stores and displays a range of items that can be used at the holiday park's beach or swimming pool.

The company has indicated that the proposal needs to display a range of different items that can be easily rearranged by employees. It will also be used and stored outdoors.



You can use one or more of the components shown on pages 24-26 within the assembly of the proposal.

**Site visits**

While visiting several of the holiday parks, it was noted that the beach and poolside locations were similar.

The following images show the typical surface and locations identified by employees.

Location of equipment storage-



The equipment storage needs to be secured to both tiled and sand surfaces.

**Interview with manager**

An activities manager from Carnival World was asked the following questions and their responses are shown below.

Q1 What items need to be stored and displayed?

*The main items that are used by our guests are inflatable rubber rings, beach balls, and buckets and spades.*

Q2 How many of each item should be displayed?

*We would like five rubber rings and five beach balls to be displayed at the same time – these would need to be displayed fully inflated. We also need space for 10 buckets and spades.*

Q3 Does the display need to be portable?

*No, ideally these will be fixed at their locations.*

Q4 Would the items need to be secured?

*Yes. Each of the items needs to be secured to the stand to prevent them blowing away in windy conditions, however they should be easy to remove when required.*

Q5 Is there a specific aesthetic the product should have?

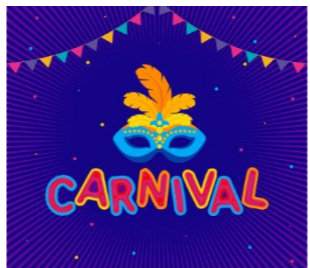
*The pool and beach areas of the holiday parks follow the Carnival World brand, so the displays should link with that.*

Q6 What is the maximum budget for each product?

*£150.*

**Images of the Carnival World brand**

The company has provided the images below, based on the Carnival World brand. They would like these used to inspire the design.



These images show contrasting colours and repeated patterns. There are also bold designs and a range of textures.

## Copyright Acknowledgements

Beach - BBA Photography/Shutterstock.com

Bouncy castle - Pinar Ince/Shutterstock.com

Carnival - pvgraphics/Shutterstock.com

Carnival World - art\_of\_sun/Shutterstock.com

Circus Ring - vectorpouch/Shutterstock.com

Ducks - aspen rock/Shutterstock.com

Helter Skelter - Greens and Blues/Shutterstock.com

Pool - Volodymyr Burdiak/Shutterstock.com