

Name: SCN:

Page: of

Notes to candidates

Before you start to analyse the research, you must select a brief and read the 'Instructions for candidates'. This gives details of the skills you must demonstrate and the type of evidence you must provide.

You should speak to your teacher or lecturer before you start, if you are unclear about what is required for this assessment.

You need to produce the specification detailed on the 'research and specification pro forma'.

You must:

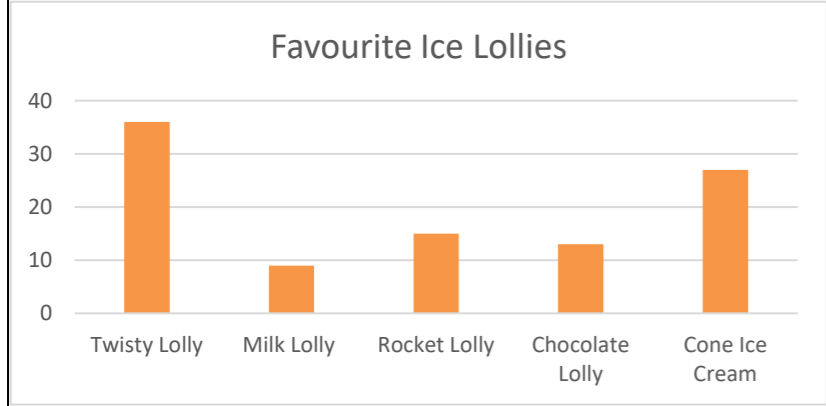
- draw conclusions from the research
- ensure your specification covers a range of issues such as aesthetics, function, ergonomics, performance, and cost

Interviews with guests

Guests were asked the following questions, their responses collated and are shown below.

Q1 What items would you like to be able to purchase around the holiday park?
The main items that guests would like to purchase were bottles of water, sun cream and ice lollies/ice cream.

Q2 What are your favourite ice lollies?



Design brief

Carnival World would like a design proposal for a product that can be moved around the holiday park. This product will be used to sell essential items to guests.

The company has indicated that the proposal needs to store a range of different refreshments and hold a wireless card reader to allow guests to make payments.

It also needs to be moved over different terrain by a single employee.

You can use one or more of the components shown on pages 24-26 within the assembly of the proposal.



Site visits

After visiting the holidays parks, the following key points were noted about the terrain the product would be used on.



A number of parents struggle to push and/or pull small wheels on the sand.



The grass at the parks can be marshy in wet conditions, and this could make it difficult to move about.

Interview with manager

A manager from one of the holiday parks was asked the following questions and their responses are shown below.

Q1 What types of terrain will the product need to be used on?
The product will need to move across grass, sand and pavements. It also needs to be stable and freestanding on these surfaces.

Q2 Will the product have a power supply?
No. A simple cool box type solution would be suitable, as all items will be chilled and frozen before being stored in the product.

Q3 How many of each item should be kept in the product?

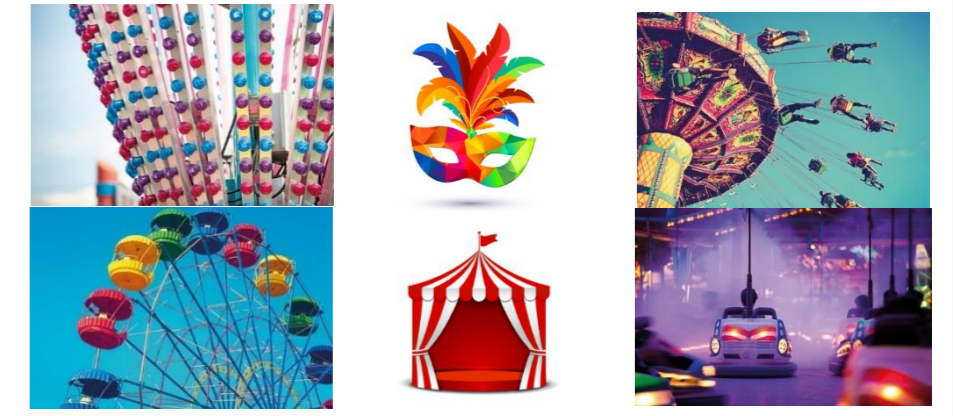
- 20 bottles of water
- 5 bottles of sun cream
- 10 of each ice lolly and ice cream

Q4 Should items be stored separately?
Yes, the three main items should be separate, as it makes it easier to access and keep track of stock.

Q5 How many products would be required and what is the budget?
We would require 50 products for all our locations across Scotland. Maximum budget per product would be £75.

Q6 Are there any other requirements for the product?
The product has to be easy to clean, fill and restock when required. As each one will be used by one employee, it should be lightweight to move when filled.

Q7 What are the aesthetic requirements for the product?
We want it to fit the Carnival World brand. Something fun and bright that stands out, similar to the images below provided by the company.



Copyright Acknowledgements

Dodgem - Ivan Soto Cobos/Shutterstock.com

Chairs - Annette Shaff/Shutterstock.com

Beach - Thierry Hebbelinck/Shutterstock.com

Big Top - Serafima82/Shutterstock.com

Carnival World - art_of_sun/Shutterstock.com

Ferris wheel - Nataliya Dorokhina/Shutterstock.com

Goals - Jasni/Shutterstock.com

Lights - The Image Party/Shutterstock.com

Mask - art_of_sun/Shutterstock.com